

PRODUCT TECHNICAL DATASHEET

BR21/361

Brushless 

Intensive use 

Digital Encoder 



CODE	DESCRIPTION	PCS/PALLET
BR21/361	Electromechanical underground motor, BRUSHLESS, low voltage, super intensive use, with native encoder onboard, irreversible, ideal for swing gates with leaf up to 4,5 m. Standard version with 10 m cable.	50

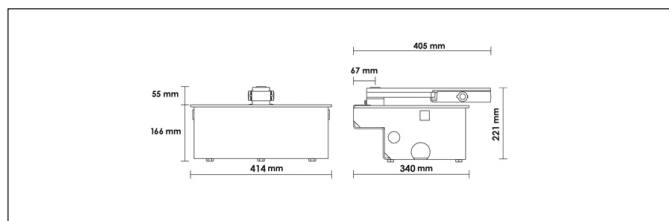
PRODUCT TECHNICAL SPECIFICATIONS

Power line supply	230V AC - 50Hz
Motor power supply	24V - 36V
Power rating	200W
Frequency of use	Intensive use
Torque	50 - 300 N m
Operating temperature	-20+55°C
Protection level	IP67
Reductor Type	Irreversible
Manoeuvre speed	1,2 Rpm
Opening time	19-29 s
Limit switch	Mechanical stoppers
Recommended digital controllers	230V: EDGE1/BOX - 115V: EDGE1/BOX/115
Encoder	Digital native encoder SENSORLESS 48 PPR
Maximum opening	105°(optional 125° - 360°)
Power supply cable length	10m
Bearing on main shaft	Standard
Operating cycles per day (opening/closing - 24 hours no stop)	1300
Maximum dimension product in mm (L x W x H)	345 x 224 x 144

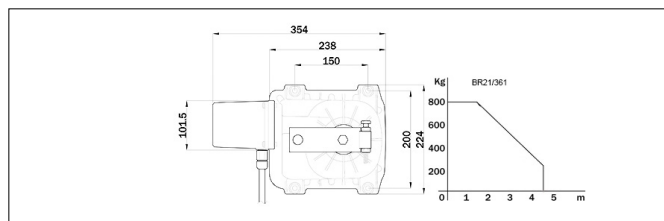
Product weight packed (Kg)	14,2
----------------------------	------

Number items per pallet/box	50
-----------------------------	----

PRODUCT DIMENSIONS AND PREPARING FOR INSTALLATION



DIMENSIONS



PREDISPOSITION FOR STANDARD INSTALLATION

PRODUCT ACCESSORIES



B71/PBX36/BOX
Hybrid inverter, "Network Assisted" version, for powering the automation. Also provides a battery-charger function thanks to the connection to the solar panels or mains supply for powering the 36V DC brushless digital controllers with a mains voltage of 230V AC.



B71/PBX36/BOX/115
Hybrid inverter, "Network Assisted" version, for powering the automation. Also provides a battery-charger function thanks to the connection to the solar panels or mains supply for powering the 36V DC brushless digital controllers with a mains voltage of 115V AC.



B71/PBX/BOX
Hybrid inverter, "Full Solar" version, for powering the automation. Also provides a battery-charger function thanks to the connection to the solar panels for powering the brushless digital controllers.



FU100
Cold galvanised foundation box and lid.



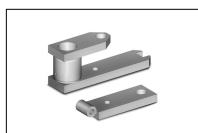
FU101
Hot galvanised foundation box and lid.



FU102
Hot galvanised foundation box and inox and AISI 304 stainless steel lid.



FU103
Inox AISI 304 foundation box and lid.



LT300
Levers for opening up to 125°.



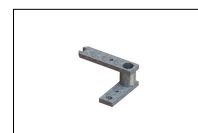
LT301
Levers for opening up to 360°.



LT301/R
Levers for opening up to 360°, with reinforced chain.



LT300/90SX
Levers for opening up to 103° - 90° turned - left.



LT300/90DX
Levers for opening up to 103° - 90° turned - right.



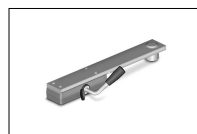
LT327/SC
Pinion gear 3/4 Z13 of adaptation in pinion combining 3/4 Z16.



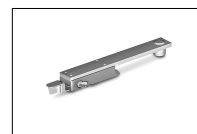
B74/BCONNECT vers. HW2
Module Wi-Fi B-CONNECT - Remote management and programming system in IP web browser mode via Wi-Fi hot spot P2P connection for Brushless control units (B70/ZML - EDGE1 - CTRL - B70/1DC - B70/1DCHP - B70/1T - B70/1THP - F70/IPU36).



RL650
Release system with standard lever.



RL650/R
Release system with standard lever, reinforced steel version.



RL651
Release system with european cylinder key.



RL663
Long release lever for underground.



R99/C/001AL
Signboard "Automatic Opening" Aluminium version.



R99/C/001
Signboard "Automatic Opening".