

# PRODUCT TECHNICAL DATASHEET

# BG30/1004/HS

Brushless 

Intensive use 

High Speed 

Digital Encoder 

Magnetic limit switch 

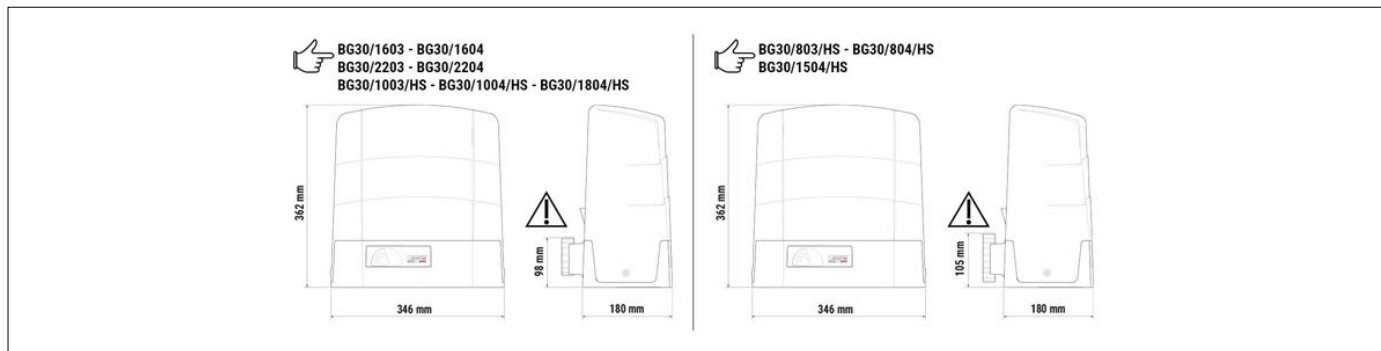


CODE	DESCRIPTION	PCS/PALLET
<b>BG30/1004/HS</b>	Electromechanical HIGH SPEED BRUSHLESS motor, low voltage, super intensive use, with native encoder onboard, irreversible ideal for sliding gates up to 1000 kg with built-in digital controller B70 series, magnetic limit switch.	30

PRODUCT TECHNICAL SPECIFICATIONS	
Max gate weight	1000 kg
Power line supply	230V AC - 50Hz
Motor power supply	36V
Power rating	590W
Frequency of use	Intensive use
Thrust	50 - 800N
Operating temperature	-20+55°C
Protection level	IP44
Reductor Type	Irreversible
Manoeuvre speed	20 m/min (0.33 m/s)
Limit switch	Magnetic
Onboard control unit	B70/1DCHP
Encoder	Digital native encoder + magnetic digital SENSORED, 4096 PPR
Batteries recovery	Optional 2 external battery 12V 4,5AH
Type exit gear	Z17/mod 4
Operating cycles per day (opening/closing - 24 hours no stop)	800

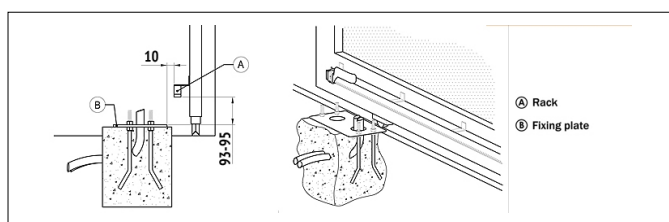
Maximum dimension product in mm (L x W x H)	350 x 220 x 380
Product weight packed (Kg)	17,5
Number items per pallet/box	30

# PRODUCT DIMENSIONS AND PREPARING FOR INSTALLATION

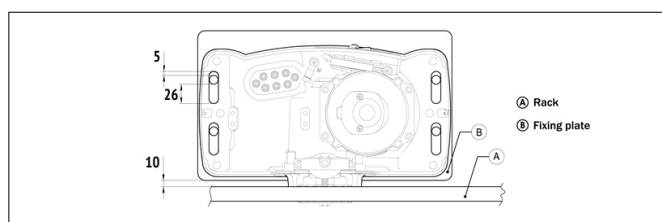


DIMENSIONS

## PRODUCT PREPARING FOR INSTALLATION

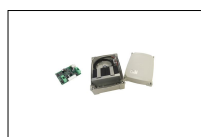


PREDISPOSITION FOR STANDARD INSTALLATION



PREDISPOSITION FOR STANDARD INSTALLATION

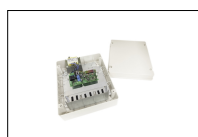
## PRODUCT ACCESSORIES



**B71/BCHP/EXT**  
Kit for emergency batteries charger for Brushless digital controller EDGE1/BOX - B70/1DCHP - B70/1THP 36V DC with plug-in card, with 2 recovery batteries 12V DC, 4.5 Ah. Box case included.



**B71/BCHP/BOX**  
Kit for emergency batteries charger for Brushless digital controller EDGE1/BOX - B70/1DCHP - B70/1THP 36V DC. Box case included and without recovery batteries.



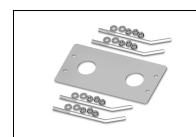
**B71/PBX36/BOX**  
Hybrid inverter, "Network Assisted" version, for powering the automation. Also provides a battery-charger function thanks to the connection to the solar panels or mains supply for powering the 36V DC brushless digital controllers with a mains voltage of 230V AC.



**B71/PBX36/BOX/115**  
Hybrid inverter, "Network Assisted" version, for powering the automation. Also provides a battery-charger function thanks to the connection to the solar panels or mains supply for powering the 36V DC brushless digital controllers with a mains voltage of 115V AC.



**B71/PBX/BOX**  
Hybrid inverter, "Full Solar" version, for powering the automation. Also provides a battery-charger function thanks to the connection to the solar panels for powering the brushless digital controllers.



**KT215**  
Fixing plate with stay bolts and screws G30 series.



**KT222**  
Raised fixing plate for G30 series (+3,5 cm).



**HT421**  
External box without batteries, for battery BT12V45 (4,5 Ah), BT12V70 (7 Ah) and BT12V120 (12 Ah), up to a maximum of 3 batteries.



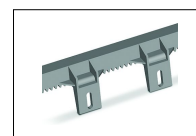
**GA550**  
Galvanised steel rack 22x22x1000 module 4.



**GA551**  
Galvanised steel rack 30x12x1000 module 4 with spacers and screws.



**GA554**  
Pocket of 6 spacers (2,5 cm) and screws.



**GA553**  
Nylon rack module 4 with 6 connectors L1000.



**GA557**  
Roger Technology nylon rack module 4 with 6 connectors L1000.



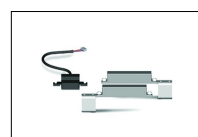
**GA558**  
Roger Technology nylon rack module 6 with 6 connectors L1000.



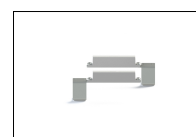
**LT328**  
Pinion Z17 mod. 4 with increased thickness H.38 for series R30 - G30 - TW110 - E30 (except BG30/804/HS - BG30/1504/HS - TW110/1000/HS).



**LT331**  
Pinion Z11 mod. 6 only for series G30 - BG30 - TW110 (except BG30/804/HS - BG30/1504/HS - TW110/1000/HS).



**MC775**  
Kit magnetic limit switch for control unit H70/103AC, H70/104AC, B70/1DC, B70/1DCHP.



**MC783**  
Pair of increased magnets for magnetic limit switch, only for GA558.



B74/BCONNECT vers. HW2  
Module Wi-Fi B-CONNECT - Remote  
management and programming  
system in IP web browser mode via  
Wi-Fi hot spot P2P connection for  
Brushless control units (B70/2ML -  
EDGE1 - CTRL - B70/1DC -  
B70/1DCHP - B70/1T - B70/1THP -  
F70/1PU36).



R99/C/001AL  
Signboard "Automatic Opening"  
Aluminium version.



R99/C/001  
Signboard "Automatic Opening".