

Emergency Lighting

COMPLETE EMERGENCY
LIGHTING SOLUTIONS



The CQR Emergency Lighting solution provides a comprehensive range of products for all your applications, supported by a full lighting design to ensure compliance and maximise safety for your project site.

1. BULKHEADS

- 150lm & 1000/1500lm
- Maintained and Non-Maintained
- IP65 & IP66 Options



2. DOWNLIGHTS: RECESSED & SURFACE

- 120/130lm & 230/270lm
- Surfaced & Recessed
- Black & White Fittings



3. EXIT BOXES



SLIM EXIT BOX

- Self-test Versions Available
- Optional Legends & Brackets
- Available in Black & White Fittings

4. EXIT SIGNS

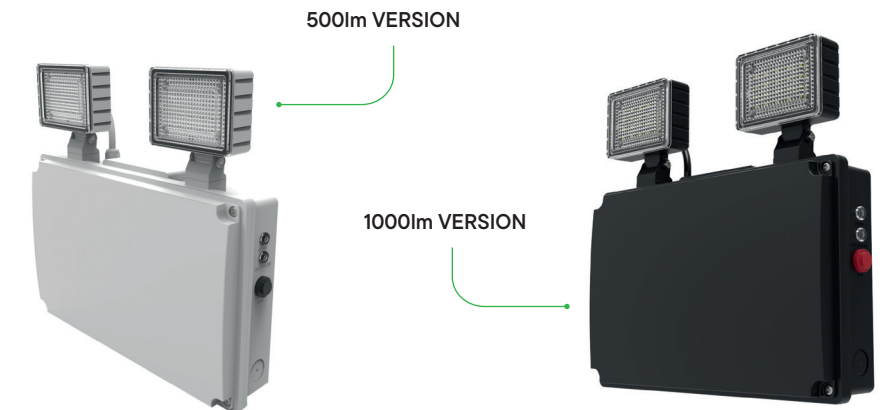


BLADE

EMERGENCY LIGHTING SOLUTIONS

5. TWIN SPOTS

- Standard & High Output
- Black & White Fittings
- IP65 & Self-test Options



PRODUCT TECHNOLOGY

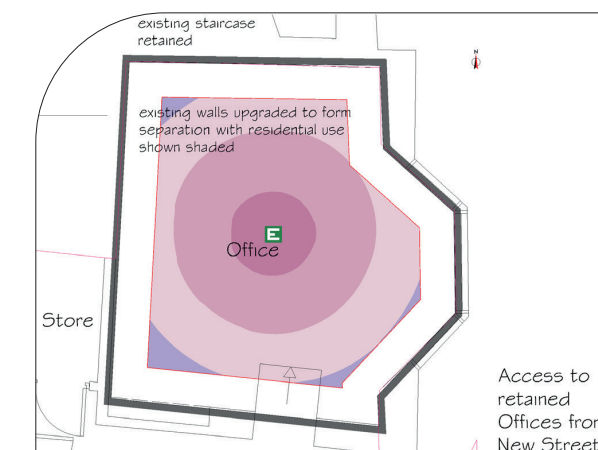
LiFeP04

Lithium Ion LiFeP04 battery technology in all of our products. CQR Lithium Ion Phosphate provides double the effective battery life of standard batteries.

PRODUCT WARRANTY



Comprehensive 5 year warranty for the full product, including battery on all CQR Emergency Lighting Products.



DESIGN SOLUTION

Free lighting design service for customers purchasing from a CQR approved stockist.

Email: lightingdesign@cqr.co.uk

Send your project requirements to our lighting design team for further details.

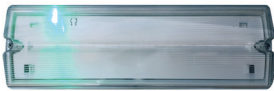
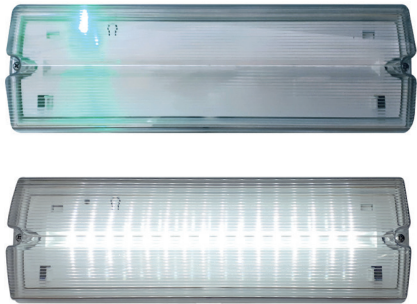


UNDERSTANDING EMERGENCY LIGHTING

MAINTAINED v NON-MAINTAINED:
WHAT IS THE DIFFERENCE?

Non-Maintained Emergency luminaires only operate during a power outage, where once activated the luminaires use their 3 hours of charged battery back up to provide adequate levels of light for the site's inhabitants to exit safely.

Maintained Emergency luminaires remain permanently on with a constant supply to ensure the battery is charged whilst the LED also remains illuminated at all times. This is commonly found in places of public assembly such as cinemas, leisure centres and other areas of public gathering.



| LED Colour | Status | On Time (Seconds) | Off Time (Seconds) | Description |
|------------|-------------------------------|-------------------|--------------------|--|
| Green | Permanent on | / | / | Normal status when mains connected |
| | Slow flash | 1s | 1s | Duration test running |
| | Fast flash | 0.2s | 0.2s | Function test running |
| | Normal flash three times only | 0.5s | 0.5s | Time reset |
| Red | Permanent on | / | / | Battery failure |
| | Slow flash | 1s | 1s | Lamp failure |
| | Fast flash | 0.2s | 0.2s | Duration failure - the capacity of the battery is not enough |
| Both Off | Off | / | / | Emergency mode |

MANUAL TEST v SELF-TEST : WHAT IS THE BENEFIT?

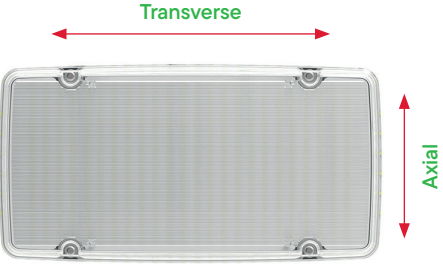
Manual test luminaires can only be tested by removing power, waiting 3 hours and visually checking to see if the emergency lighting is still on. This manual process takes significant time and labour to check.

Self-test units perform their own tests to an internal timer, negating the need for manual testing. It is important however to visually inspect the self-test luminaires to see if they contain any error codes as per the referenced table to the side of this paragraph for our Bulkhead Plus Self-test model.

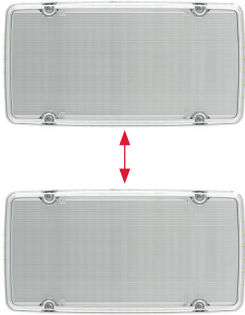
SPACING TABLES: WHAT IS THEIR PURPOSE?

CQR Emergency Luminaires are provided with spacing tables on our product data sheets or by following the QR code link on each product page of this catalogue. Spacing tables are used as quick reference guides for specifiers, without needing to run a full lighting design. The tables will allow the user to tell how far apart luminaires can be spaced whilst maintaining a minimum lux level. Full computer software generated lighting designs provide a more comprehensive solution however to spacing tables for larger projects.

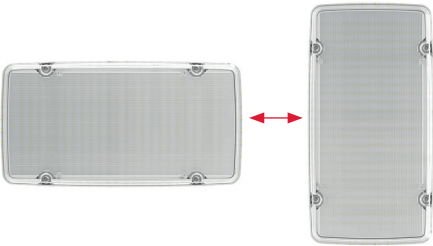
Spacing tables display a range of icons on the top line illustrating the different possible relationship between the luminaires and surroundings. The relationship to other luminaires, orientations, mounting height and surroundings significantly effects the lux level achieved at each point. The words 'transverse' and 'axial' simply tell you which way the luminaires are orientated. For the circular luminaires, they tell you which way the 'photometry' is orientated. Please see the below illustration of axial and transverse in relation to our emergency luminaire types:



BULKHEAD MAX



TRANSVERSE TO TRANSVERSE



AXIAL TO TRANSVERSE

Spacing Data [1 lux]

| Mounting Height (m) | | | | | |
|---------------------|------|------|------|------|------|
| 2.50 | 1.57 | 4.77 | 6.74 | 8.92 | 3.64 |
| 3.00 | 1.32 | 4.55 | 6.94 | 9.57 | 3.49 |

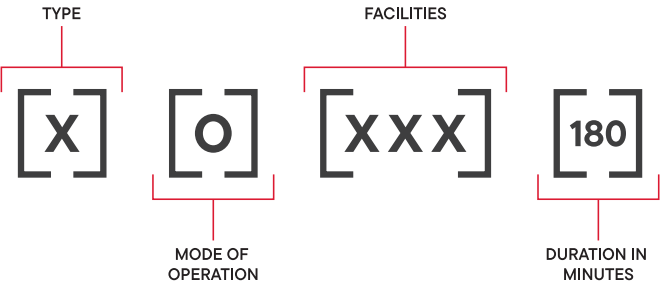
SPACING TABLES
TYPICALLY LOOK LIKE THE
FOLLOWING FORMAT:

UNDERSTANDING EMERGENCY LIGHTING

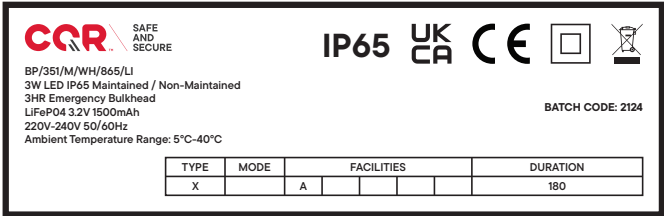
EMERGENCY LIGHTING CLASSIFICATIONS: WHAT ARE THEY?

In accordance with EN 60598-2-22 emergency luminaires are to be classified and marked according to their function and construction. On all Emergency luminaires a sticker is now visible with four squares as detailed below:

EMERGENCY LIGHTING CLSSIFICATION:



CQR CLASSIFICATION LABEL ON OUR
EMERGENCY LUMINARIES:



1. TYPE

- X Self-Contained
- Y Central Battery

2. MODE OF OPERATION

- 0 Non-Maintained
- 1 Maintained
- 2 Combined Non-Maintained
- 3 Combined Maintained
- 4 Compound Non-Maintained
- 5 Compound Maintained
- 6 Satellite

3. FACILITIES

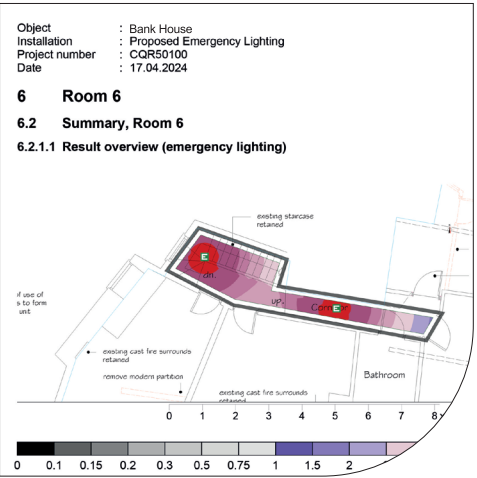
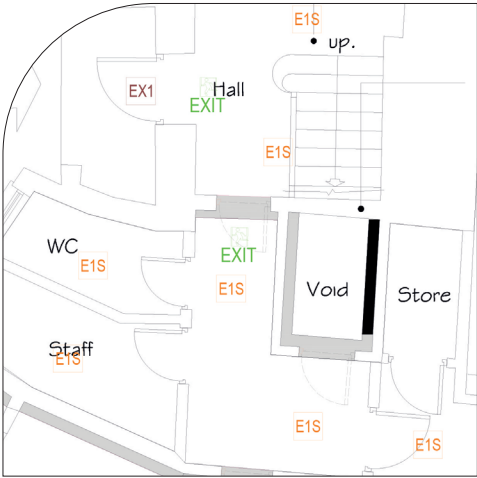
- A Including test device
- B Including remote test device
- C Including inhibiting mode
- D High risk task luminaire
- E Non-replaceable lamps or battery
- F Automatic test gear
- G Internally illuminated safety sign

4. DURATION IN MINUTES

10, 60, 120 or 180

LIGHTING DESIGN :
WHY SHOULD YOU
REQUEST A DESIGN?

CQR provides a complimentary Emergency Lighting design service for our stockist dealers, providing our customers with the full design plans and photometric data for added installer confidence and project support. CQR Emergency lighting designs will also show you the most efficient way to provide a compliant system utilising our wide range of luminaires to ensure the best product for the application requirements.



Emergency Bulkheads

07 EMERGENCY BULKHEADS

- 08 Bulkhead Plus
- 09 Bulkhead Max

10 EMERGENCY DOWNLIGHTS

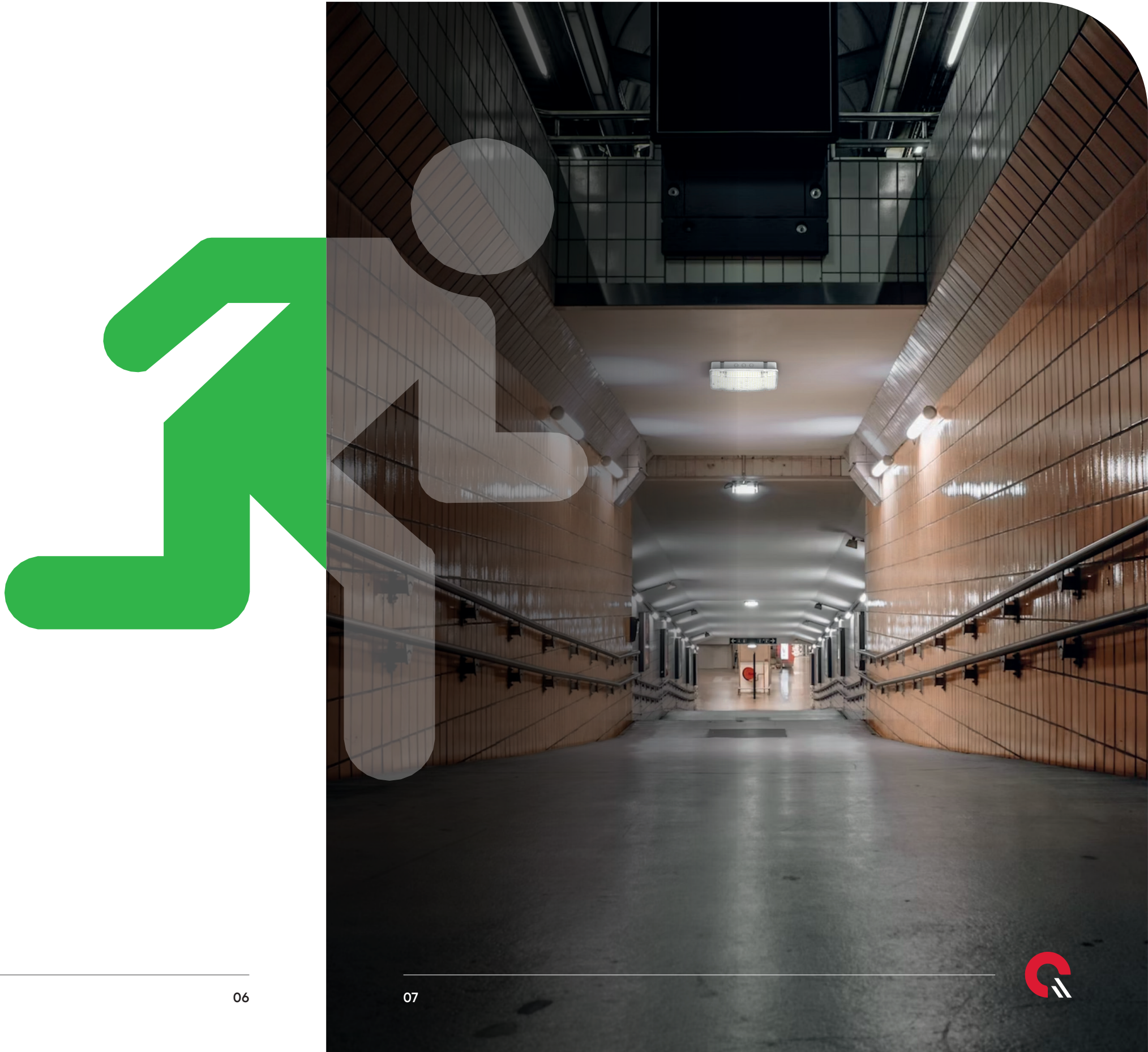
- 11 Spot Non-Maintained Recessed
- 12 Escape Square - Surface Mount
- 13 Escape Round - Surface Mount

14 EMERGENCY EXIT BOXES & EXIT SIGNS

- 15 Exit Box Slimline
- 16-17 Blade 5 in 1

18 EMERGENCY TWIN SPOTS

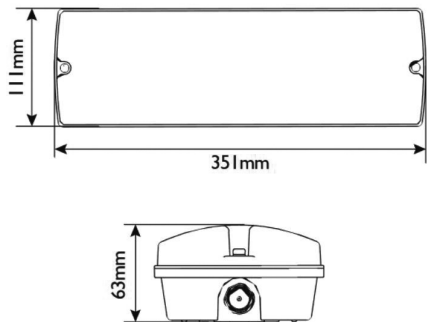
- 19 500lm & 1000lm Versions



EMERGENCY BULKHEADS - Bulkhead Plus



Scan the QR code to see the product spacing data



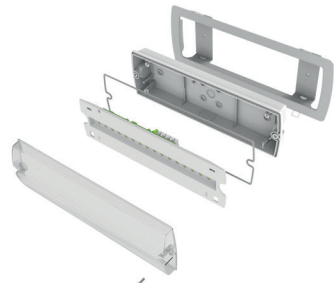
PRODUCT DESCRIPTION

- Class II, IP65, 3 hours emergency bulkhead
- Hinged gear tray with push fit terminals
- Maintained & non-maintained optionality as standard
- Installation – surface or recessed by mounting kit
- Manual test and Self-test options available
- Exit sign diffuser available to order
- 5 years warranty: full fitting and battery

OPTIONAL EXIT SIGN DIFFUSER
AND LEGEND KIT
BP/EXITKIT



OPTIONAL RECESS KIT
BP/RECESSKIT



PRODUCT SPECIFICATION

| | |
|--------------------------|---|
| VOLTAGE | AC 220-240V |
| INPUT POWER | 3.2W (Charging Mode) 1W (Emergency Mode) |
| LUMEN OUTPUT (MAINS) | 150lm |
| LUMEN OUTPUT (EMERGENCY) | 175lm |
| EMERGENCY DURATION | 3 Hours |
| EMERGENCY POWER | 1W |
| COLOUR TEMP | 6500K |
| BEAM ANGLE | 120° |
| RATED LIFE | L80 50,000hrs |
| IP RATING | IP65 |
| MATERIAL | Polycarbonate |
| WARRANTY | 5 Years: full fitting and battery |

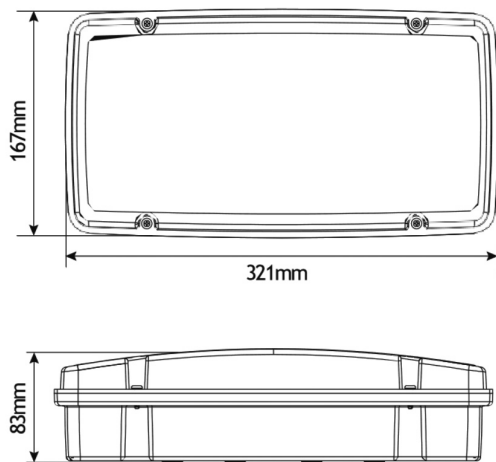
| PRODUCT CODE | PRODUCT DESCRIPTION |
|--------------------|--|
| BP/351/M/WH/865/LI | CQR LED Emergency Bulkhead Plus, 3W, Maintained, IP65, LiFeP04 |
| BP/351/ST/WH/865 | CQR LED Emergency Bulkhead Plus, SELF-TEST - 3W, Maintained, IP65, LiFeP04 |

| ACCESSORY CODE | PRODUCT DESCRIPTION |
|--------------------|--|
| BATTERY/18650/1500 | CQR Replacement Battery Bulkhead Plus / Spot Downlight / Exit Box Slimline |

EMERGENCY BULKHEADS - Bulkhead Max



Scan the QR code to see the product spacing data



PRODUCT DESCRIPTION

- High Output Emergency Bulkhead: 1000/1500lm
- IP66: Ideal for high installations such as plant rooms or lift shafts
- Integrated gear tray into diffuser for easy install
- Non-maintained with self test options available
- Manual test and Self-test options available
- Emergency power: 6W/10W & 1000/1500lm
- 5 years warranty: full fitting and battery



PRODUCT SPECIFICATION

| | |
|--------------------------|---|
| VOLTAGE | AC 220-240V |
| INPUT POWER | 4.5W (Charge mode) 6.6W@1000lm (Emergency mode) 10W@1500lm (Emergency mode) |
| LUMEN OUTPUT (MAINS) | 1000lm / 1500lm selectable |
| LUMEN OUTPUT (EMERGENCY) | 1083lm / 1587lm |
| EMERGENCY DURATION | 3 Hours |
| EMERGENCY POWER | 6W / 10W |
| COLOUR TEMP | 6500K |
| BEAM ANGLE | 135° |
| RATED LIFE | L70 50,000hrs |
| IP RATING | IP66 |
| MATERIAL | Polycarbonate |
| WARRANTY | 5 Years: full fitting and battery |

| PRODUCT CODE | PRODUCT DESCRIPTION |
|-----------------|--|
| BM/10/NM/WH/865 | CQR LED Emergency Bulkhead MAX High Output, Non-Maintained, 1500lm, IP65-White |
| BM/10/ST/WH/865 | CQR LED Emergency Bulkhead MAX High Output, SELF-TEST, 1500lm, IP65-White |

| ACCESSORY CODE | PRODUCT DESCRIPTION |
|--------------------|---|
| BATTERY/26650/6600 | CQR Replacement Battery Bulkhead Max / Twin Spots 2 x 500lm |



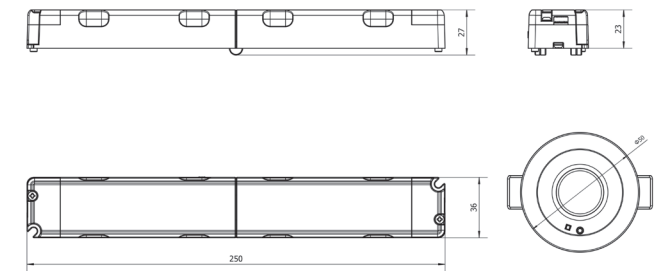
Emergency Downlights



EMERGENCY DOWNLIGHTS - Spot Non-Maintained Recessed



Scan the QR code to see the product spacing data



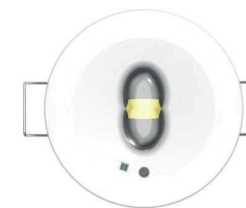
PRODUCT DESCRIPTION

- Emergency Downlight Spot: Recessed
- Supplied with Open Area Lens (120lm) and Corridor Lens (130lm) as standard
- Foldable converter: easy to install
- Non-maintained fitting
- 5 years warranty: full fitting and battery
- Available in black and white
- Self-test functions available

OPEN AREA LENS
120lm



CORRIDOR LENS
130lm



PRODUCT SPECIFICATION

| | |
|--------------------------|--|
| VOLTAGE | AC 220-240V |
| INPUT POWER | 12W (Charging power) / 0.4W (Charging power when battery full) / 1W (Emergency mode) |
| LUMEN OUTPUT (EMERGENCY) | Open Area Lens: 120lm and Corridor Lens: 130lm |
| EMERGENCY DURATION | 3 Hours |
| EMERGENCY POWER | 1W |
| COLOUR TEMP | 6500K |
| BEAM ANGLE | 165° (Open area) / 160° x 50° (Corridor) |
| RATED LIFE | L80 50,000hrs |
| IP RATING | IP20 |
| MATERIAL | Polycarbonate |
| WARRANTY | 5 Years: full fitting and battery |

| PRODUCT CODE | PRODUCT DESCRIPTION |
|----------------|--|
| SP/1/NM/WH/865 | CQR LED Emergency Downlight Spot c/w Open Area & Corridor Lens - White |
| SP/1/NM/BK/865 | CQR LED Emergency Downlight Spot c/w Open Area & Corridor Lens - Black |
| SP/1/ST/WH/865 | CQR LED Emergency Downlight Spot - SELF-TEST - c/w Open Area & Corridor Lens - White |

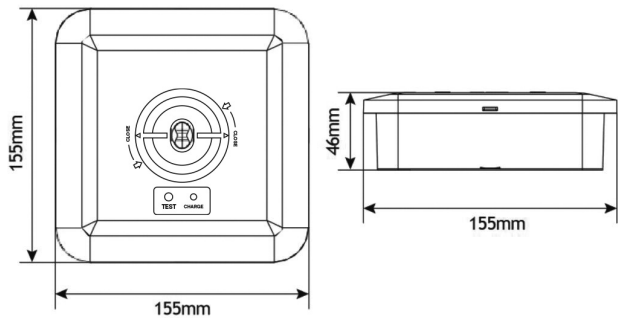
| ACCESSORY CODE | PRODUCT DESCRIPTION |
|--------------------|--|
| BATTERY/18650/1500 | CQR Replacement Battery Bulkhead Plus / Spot Downlight / Exit Box Slimline |



EMERGENCY DOWNLIGHTS - Escape Square - Surface Mount



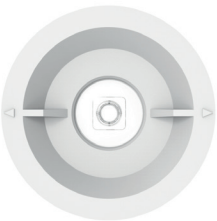
Scan the QR code to see the product spacing data



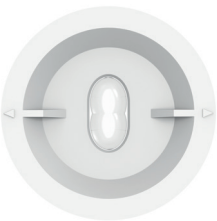
PRODUCT DESCRIPTION

- Emergency Downlight: Surface Mount Escape Square
- Supplied with Open Area Lens (270lm) & Corridor Lens (230lm)
- IP65 rated
- 5 years warranty: full fitting and battery
- Available in black and white
- Self-test functions available
- 20mm conduit entry points
- Ideal for restaurants & large open areas

OPEN AREA LENS
270lm



CORRIDOR LENS
230lm



BLACK ESCAPE SQUARE
ES/2/NM/BK/865



PRODUCT SPECIFICATION

| | |
|--------------------------|--|
| VOLTAGE | AC 220-240V |
| INPUT POWER | 2W (Charging power) / 2W (Emergency mode) |
| LUMEN OUTPUT (EMERGENCY) | Open Area Lens: 270lm and Corridor Lens: 230lm |
| EMERGENCY DURATION | 3 Hours |
| EMERGENCY POWER | 2W |
| COLOUR TEMP | 6500K |
| BEAM ANGLE | Open area - 150°/ Corridor - 80° x 30° |
| RATED LIFE | L80 50,000hrs |
| IP RATING | IP65 |
| MATERIAL | Polycarbonate |
| WARRANTY | 5 Years: full fitting and battery |

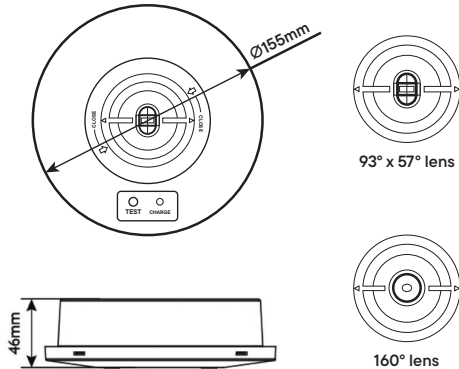
| PRODUCT CODE | PRODUCT DESCRIPTION |
|----------------|--|
| ES/2/NM/WH/865 | CQR LED Emergency Escape Square Surface Downlight c/w 2 Lens, IP65 - White |
| ES/2/NM/BK/865 | CQR LED Emergency Escape Square Surface Downlight c/w 2 Lens, IP65 - Black |
| ES/2/ST/WH/865 | CQR LED Emergency Escape Square Surface Downlight - SELF-TEST - c/w 2 Lens, IP65 - White |

| ACCESSORY CODE | PRODUCT DESCRIPTION |
|--------------------|---|
| BATTERY/18650/3300 | CQR Replacement Battery Escape Square & Round |

EMERGENCY DOWNLIGHTS - Escape Round - Surface Mount



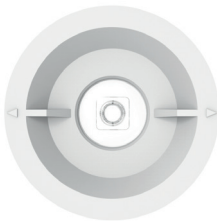
Scan the QR code to see the product spacing data



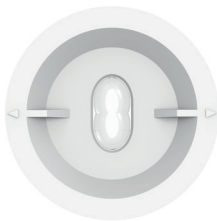
PRODUCT DESCRIPTION

- Emergency Downlight: Surface Mount Escape Round
- Supplied with Open Area Lens (270lm) & Corridor Lens (230lm)
- IP65 rated
- 5 years warranty: full fitting and battery
- Available in black and white
- Self-test functions available
- 20mm conduit entry points
- Ideal for restaurants & large open areas

OPEN AREA LENS
270lm



CORRIDOR LENS
230lm



BLACK ESCAPE ROUND
ER/2/NM/BK/865



PRODUCT SPECIFICATION

| | |
|--------------------------|--|
| VOLTAGE | AC 220-240V |
| INPUT POWER | 2W (Charging power) / 2W (Emergency mode) |
| LUMEN OUTPUT (EMERGENCY) | Open Area Lens: 270lm and Corridor Lens: 230lm |
| EMERGENCY DURATION | 3 Hours |
| EMERGENCY POWER | 2W |
| COLOUR TEMP | 6500K |
| BEAM ANGLE | Open area - 150°/ Corridor - 80° x 30° |
| RATED LIFE | L80 50,000hrs |
| IP RATING | IP65 |
| MATERIAL | Polycarbonate |
| WARRANTY | 5 Years: full fitting and battery |

| PRODUCT CODE | PRODUCT DESCRIPTION |
|----------------|---|
| ER/2/NM/WH/865 | CQR LED Emergency Escape Round Surface Downlight c/w 2 Lens, IP65 - White |
| ER/2/NM/BK/865 | CQR LED Emergency Escape Round Surface Downlight c/w 2 Lens, IP65 - Black |
| ER/2/ST/WH/865 | CQR LED Emergency Escape Round Surface Downlight - SELF-TEST - c/w 2 Lens, IP65 - White |

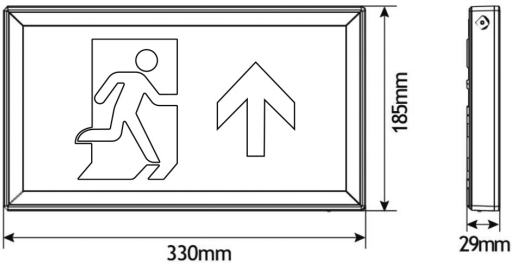
| ACCESSORY CODE | PRODUCT DESCRIPTION |
|--------------------|---|
| BATTERY/18650/3300 | CQR Replacement Battery Escape Square & Round |



Emergency Exit Boxes & Exit Signs

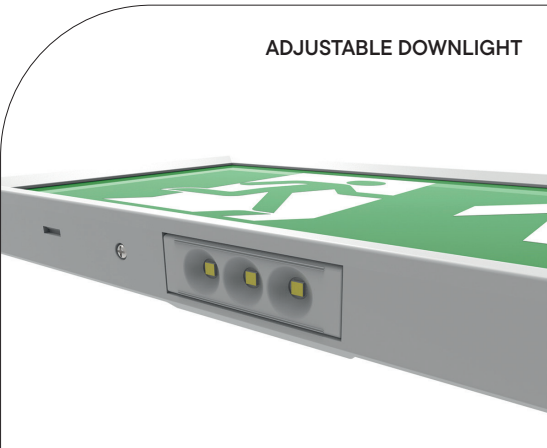


EMERGENCY EXIT BOXES - Slimline



PRODUCT DESCRIPTION

- Emergency slim exit box
- Includes arrow up legend
- Other legends available separately
- 30 metre viewing distance
- Angle adjustable downlight
- Maintained & Non-maintained optionality as standard
- Self-test function available
- Available in white and black



BLACK SLIMLINE EXIT BOX
SE/4/M/BK/865



PRODUCT SPECIFICATION

| | |
|--------------------------|--|
| VOLTAGE | AC 220-240V |
| INPUT POWER | <4W |
| LUMEN OUTPUT (EMERGENCY) | 10lm (legend) 80lm (downward light) |
| VIEWING DISTANCE | 30M |
| EMERGENCY DURATION | 3 Hours |
| EMERGENCY POWER | 1W |
| COLOUR TEMP | 6500K |
| BEAM ANGLE | 55° |
| RATED LIFE | L80 50,000hrs |
| IP RATING | IP20 |
| MATERIAL | Polycarbonate |
| WARRANTY | 5 Years: full fitting and battery |

| PRODUCT CODE | PRODUCT DESCRIPTION |
|----------------|---|
| SE/4/M/WH/865 | CQR LED Emergency Slimline Exit Box c/w Arrow Up Legend - White |
| SE/4/M/BK/865 | CQR LED Emergency Slimline Exit Box c/w Arrow Up Legend - Black |
| SE/4/ST/WH/865 | CQR LED Emergency Slimline Exit Box - SELF-TEST - c/w Arrow Up Legend - WHITE |

| ACCESSORY CODE | PRODUCT DESCRIPTION |
|--------------------|--|
| SE/4/LEG/D | CQR Emergency Legend for Slim Exit Box, Arrow Down |
| SE/4/LEG/L | CQR Emergency Legend for Slim Exit Box, Arrow Left |
| SE/4/LEG/R | CQR Emergency Legend for Slim Exit Box, Arrow Right |
| BATTERY/18650/1500 | CQR Replacement Battery Bulkhead Plus / Spot Downlight / Exit Box Slimline |





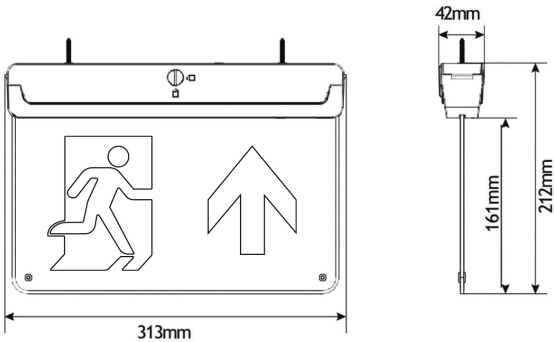
PRODUCT DESCRIPTION

- 5 in 1 emergency exit sign
- Maintained & Non-maintained optionality as standard
- Includes arrow up legend
- Other legends available separately
- Wall and surface mount as standard
- Kits available for: recessed/flag & suspension mounting options
- LED indicator and test button
- Manual test and Self-test options available
- Available in white and black

PRODUCT SPECIFICATION

| | |
|--------------------------|--|
| VOLTAGE | AC 220-240V |
| INPUT POWER | M = 3W, NM = 0.8W Emergency Mode = 0.8W |
| LUMEN OUTPUT (MAINS) | 24lm |
| LUMEN OUTPUT (EMERGENCY) | 23lm |
| VIEWING DISTANCE | 30M |
| EMERGENCY DURATION | 3 Hours |
| EMERGENCY POWER | 0.8W |
| COLOUR TEMP | 6500K |
| RATED LIFE | L70 50,000hrs |
| IP RATING | IP20 |
| MATERIAL | Polycarbonate |
| WARRANTY | 5 Years: full fitting and battery |

| PRODUCT CODE | PRODUCT DESCRIPTION |
|------------------|---|
| BL/310/M/BK/865 | CQR LED Emergency Blade Exit Sign c/w Arrow Up Legend - Black |
| BL/310/M/WH/865 | CQR LED Emergency Blade Exit Sign c/w Arrow Up Legend - White |
| BL/310/ST/WH/865 | CQR LED Emergency Blade Exit Sign - SELF-TEST - c/w Arrow Up Legend - White |



MULTI-FIX METHODS:

Wall and surface as standard
Recessed/flag and suspension kits required*

RECESSED
BL/310/RECKIT/WH OR BK*



WALL
AS STANDARD



FLAG
BL/310/FLAGKIT/WH OR BK*



SURFACE
AS STANDARD



SUSPENSION
BL/310/SUSKIT/WH OR BK*



| ACCESSORY CODE | PRODUCT DESCRIPTION |
|--------------------|--|
| BL/310/LEG/D | CQR Emergency Legend for Blade Exit Sign, Arrow Down |
| BL/310/LEG/LR | CQR Emergency Legend for Blade Exit Sign, Arrow Left/Right |
| BL/310/RECKIT/WH | CQR Emergency Recessed Kit for Blade Exit Sign - White |
| BL/310/SUSKIT/BK | CQR Emergency Suspended kit for BLADE Exit Sign - BLACK |
| BL/310/SUSKIT/WH | CQR Emergency Suspended kit for BLADE Exit Sign - WHITE |
| BL/310/FLAGKIT/WH | CQR Emergency Flag Mounting Kit for Blade Exit Sign |
| BATTERY/18650/1100 | CQR Replacement Battery Exit Sign Blade 5 in 1 |



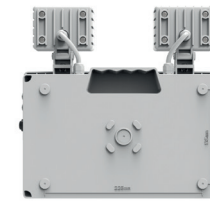
Emergency Twin Spots



EMERGENCY TWIN SPOTS - 500lm & 1000lm Versions

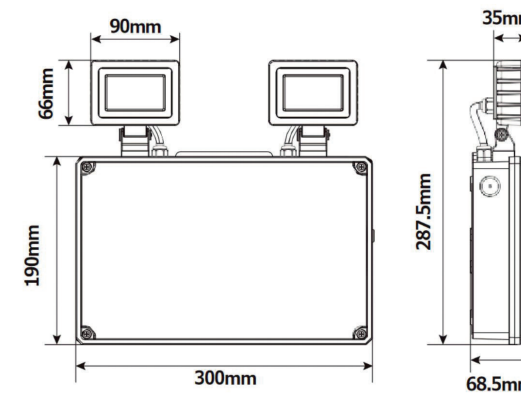


Scan the QR code to see the product spacing data



PRODUCT SPECIFICATION

| | TS/4: 2 x 250lm | TS/8: 2 x 500lm |
|--------------------------|---|---|
| VOLTAGE | AC 220-240V | AC 220-240V |
| INPUT POWER | 2.2W (Charging mode) 4W (Discharge mode) | 4.2W (Charging mode) 9W (Discharge mode) |
| LUMEN OUTPUT (MAINS) | 500lm | 1000lm |
| LUMEN OUTPUT (EMERGENCY) | 540lm | 1139lm |
| EMERGENCY DURATION | 3 Hours | 3 Hours |
| EMERGENCY POWER | 2.2W (Charging Mode) 4W (Discharge Mode) | 4.2W (Charging Mode) 9W (Discharge Mode) |
| COLOUR TEMP | 6500K | 6500K |
| RATED LIFE | L70 50,000hrs | L70 50,000hrs |
| IP RATING | IP65 | IP65 |
| MATERIAL | Polycarbonate | Polycarbonate |
| WARRANTY | 5 Years: full fitting and battery | 5 Years: full fitting and battery |



PRODUCT DESCRIPTION

- Emergency Twin Spots: 500lm & 1000lm versions
- 1000lm output version suitable for larger areas
- Narrow or wide beam angle options
- Self-test function available
- Available in white and black

AVAILABLE IN BLACK FOR BOTH THE
2 X 250lm & 2 X 500lm VERSIONS



| PRODUCT CODE | PRODUCT DESCRIPTION |
|----------------|---|
| TS/4/NM/WH/865 | CQR LED Emergency Twin Spot, 2 x 250lm, IP65 - White |
| TS/4/NM/BK/865 | CQR LED Emergency Twin Spot, 2 x 250lm, IP65 - Black |
| TS/4/ST/WH/865 | CQR LED Emergency Twin Spot - SELF-TEST - 2 x 250lm, IP65 - White |
| TS/8/NM/WH/865 | CQR LED Emergency Twin Spot, 2 x 500lm, IP65 - White |
| TS/8/NM/BK/865 | CQR LED Emergency Twin Spot, 2 x 500lm, IP65 - Black |
| TS/8/ST/WH/865 | CQR LED Emergency Twin Spot - SELF-TEST - 2 x 500lm, IP65 - White |

| ACCESSORY CODE | PRODUCT DESCRIPTION |
|--------------------|---|
| BATTERY/26650/6600 | CQR Replacement Battery Twin Spots 2 x 250lm |
| BATTERY/26650/6600 | CQR Replacement Battery Bulkhead Max / Twin Spots 2 x 500lm |





**CUSTOMER SERVICE/
TECH SUPPORT**

14-16 HOGHTON STREET,
SOUTHPORT, MERSEYSIDE,
PR9 0PA, UK

ACCOUNTS TEAM

110B WALSALL ROAD,
CANNOCK, STAFFORDSHIRE,
WS11 0JB, UK

**MANUFACTURING/
DISTRIBUTION**

125 PASTURE ROAD,
MORETON, WIRRAL,
CH46 4TH, UK

MAIN: +44 (0)151 606 1000

**INFO@CQR.CO.UK
TECH@CQR.CO.UK**

CQR.CO.UK



DISTRIBUTED BY: