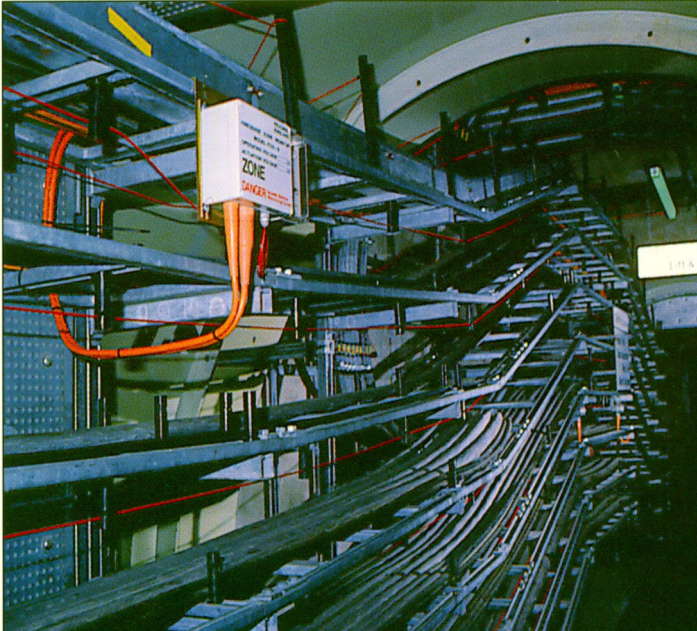
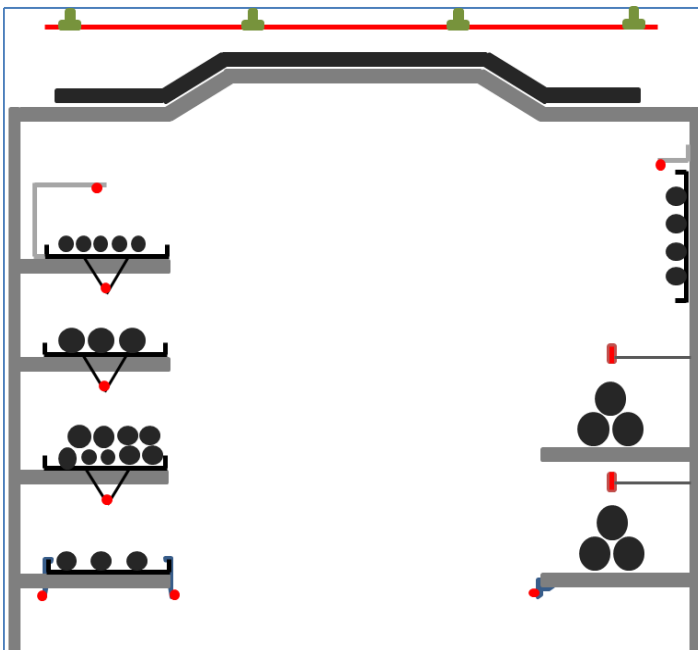


Application Fixings

Linear Heat Detection Cable LHDC



The below drawing represents various clips and fixings that can be used in a typical cable tunnel. Patol supply a full range as shown over the page.



General guidelines for installation of LHDC:

The correct size and type of cable gland must be used on all junction box etc.

Due to the high impedance of the Resettable (Analogue) system, all connections at EOL, JB and interposing cable must be protected with silicone grease.

LHDC should be installed so that it is not severely compressed and is not in contact with sharp objects that may damage the outer sheath.

LHDC minimum bend radius is 10mm (Analogue) & 50mm (Digital)

LHDC must not be tensioned between supports especially at changes of direction.

Neoprene sleeves should always be used in conjunction with cable ties.

The distance between supports shall be between 0.6m and 1.2m depending upon available fixing positions.

The routing of LHDC shall be chosen to avoid contact or close proximity with any local sources of heat e.g. light fixings, steam pipes etc.

The minimum number of joints should be made in any zone and these connections should be with the recommended Patol junction box and cable glands.

LHDC should be fixed using approved clips and brackets.

In accordance with BS5389 pt1 2002, LHDC should be spaced no more than 5.3m away from any zone boundary or wall; and no more than 10.6m between adjacent runs.

Additionally LHDC should be installed such that it is between 25mm and 150mm from the ceiling.

* The above general recommendations are for guidance only, there may be conditions at site or client requirements where some of the above criteria need to be varied.

Application Fixings

Linear Heat Detection Cable LHDC

Clips & Fixings



T-Clip	Black Plastic Upper temperature +85°C Lower temperature -50°C Material Degrades at +120°C Pack x25 700-627 Pack x100 700-628 * Cable tie supplied separately.
---------------	---



Cable Tie - Black	200mm 700-600 300mm 700-602
Cable Tie - Stainless	150mm 700-642



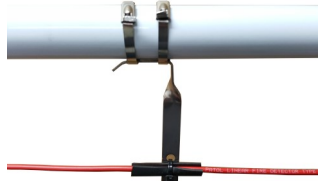
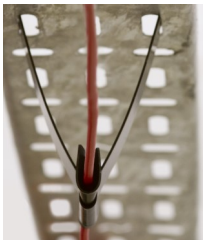
Neoprene Sleeve 10mm x 40mm	700-608
UV / Chemical Resistant	Upper Temperature +95°C Lower Temperature -40°C



P-Clip	Stainless Steel with rubber protection 3mm (suit 700-001, 700-005, 700-070, 700-090, 700-180) 700-660 4mm (suit 700-003, 700-071, 700-091, 700-181) 700-661 5mm (suit 700-004) 700-639
---------------	--



Knock on Clip: Side	MS Galvanised 2 to 3mm 700-611 3 to 7mm 700-612 8 to 13mm 700-613 14 to 20mm 700-614
----------------------------	--



Edge Clip	MS Galvanised 1.5 to 6mm 700-616
------------------	--

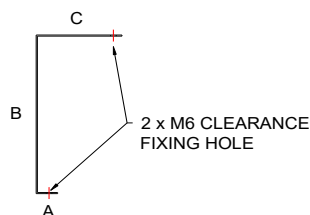
Bracket: V Clip	Spring Steel Stainless 700-632
Rubber Pad	(for use with V Clip) 700-607

Bracket: Pipe Clip	Stainless Steel 316 700-636
---------------------------	------------------------------------



L Bracket	Stainless Steel 304* (20mm wide) 30 x 25mm 700-640 70 x 25mm 700-645 210 x 25mm 700-646
------------------	---

* Stainless Steel 316 available upon request



Universal Support Stainless Steel 304* (20mm wide)

DIMENSION A	DIMENSION B	DIMENSION C	PART NUMBER
25mm	70mm	45mm	700-635
25mm	70mm	100mm	700-638
25mm	200mm	100mm	700-637
25mm	200mm	200mm	700-631

* Stainless Steel 316 available upon request